

Nexthink Server Collector – Expand Your End-User Analytics To Any Windows Server With Nexthink V6

COMPLEXITY IS OVERWHELMING IT ORGANIZATIONS

Complexity is dramatically affecting almost every area of IT. Nexthink’s IT analytics for Windows Server’s discovers complex patterns in high volumes of “noisy” IT system availability and performance data. The goal is to discover and make IT aware of things that matter most – things that affect the end-user and end-user services.

Nexthink’s unique continuous real-time approach helps you understand relevant situations and trends with your end-users and server environment to manage change and deliver more business value to your organization. Nexthink’s unique approach has resulted in Nexthink winning numerous industry awards and being named a Gartner Cool Vendor.

NEXTHINK SERVER COLLECTOR ENHANCES AND IMPROVES YOUR VISIBILITY OF WINDOWS SERVERS

All the visibility you have come to depend on for your endpoints, using the Nexthink Collector, is now available for Windows Server 2008 R2 and later. The Nexthink Server Collector (NSC), included in Nexthink V6, will enhance server security and compliance, validate outsourced

server management policies and SLA’s, provide server back-end connectivity visibility, and provide an accurate accounting of physical and virtual application and desktop user experience.

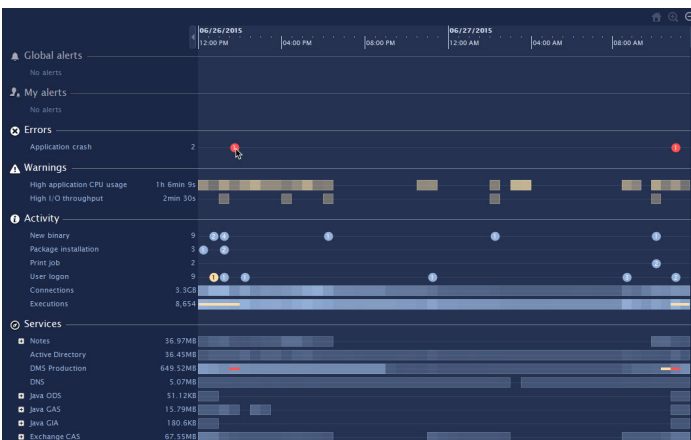
BOOST SERVER SECURITY AND COMPLIANCE

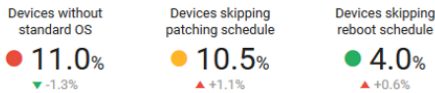
Nexthink provides unprecedented server security and compliance validation for Windows 2008 R2 and later servers, as well as server virtual machines running the supported Windows operating systems. The NSC provides continuous real-time insight into hardware, software, user accounts, and front-end and back-end server connectivity.

The NSC reports data on all administrator activity

Key Features

- ▶ Continuous real-time server data using Nexthink V6 Server Collector
- ▶ Server front-end and back-end mapping visibility
- ▶ Malicious web and cloud monitoring
- ▶ Complete server hardware, software, and service inventory
- ▶ Complete visibility of virtual application and desktop delivery
- ▶ Administrator activity visibility and credential auditing
- ▶ Crash and performance investigation
- ▶ Patch validation
- ▶ Detection of undocumented changes
- ▶ Support for up to 500 Windows servers per Nexthink Engine

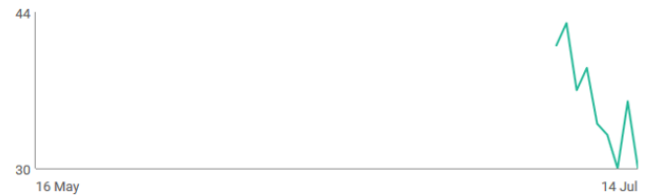




Devices without standard OS

OS family	Ratio	Total	Out of
Overall	11.0%	30	272
Mobile	13.5%	14	104
Windows	12.3%	14	114
Mac OS	6.9%	2	29
Server	6.0%	4	67

Trend of devices without standard OS



to ensure the correct accounts are being used and that the activity occurring using those accounts is within policy and established protocols. The NSC reports all changes made to the hardware, software, and server configuration – helping investigations of crashes and poor application performance, as well as reconciling documented and undocumented changes.

VALIDATE SERVER OUTSOURCING SLA'S

The NSC is the perfect tool for you if you are interested in independently validating the work your outsourced server management provider is performing. As an example, the NSC provides data for you to independently verify that server patching and updates are being handled within the required

SLA. Anything to do with the hardware, software, and services running on your servers can be reviewed within custom dashboards or via detailed investigations using just a few simple mouse clicks.

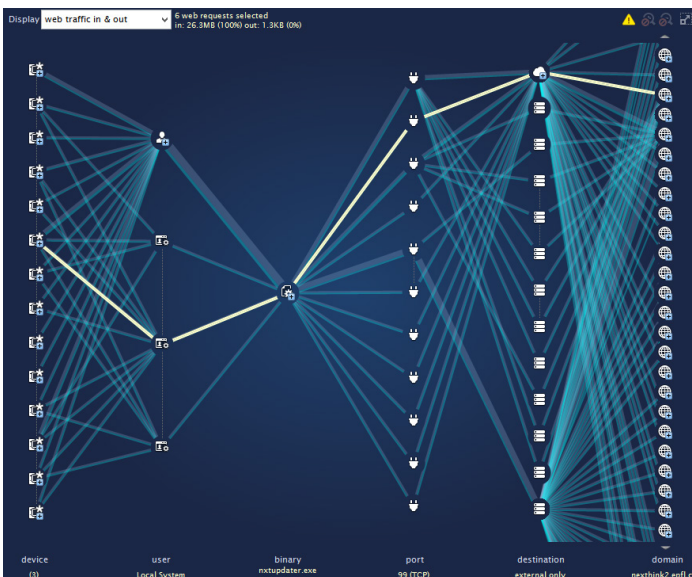
MAPPING FRONT-END AND BACK-END SERVER ACTIVITY AND CONNECTIVITY

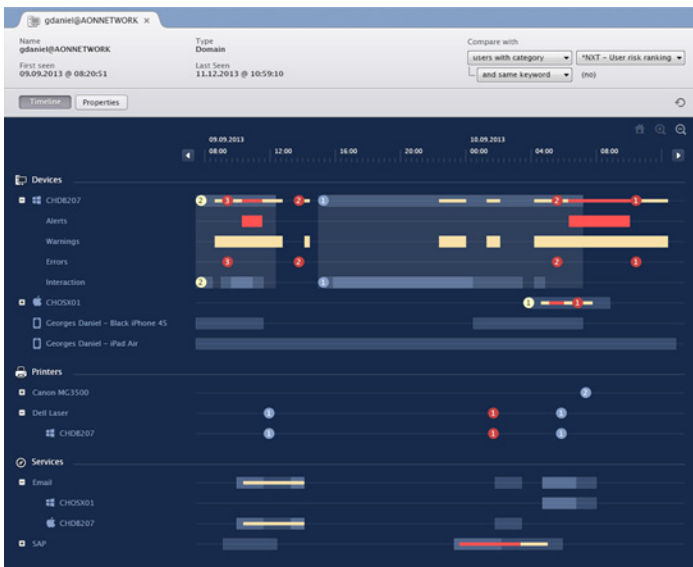
Unlike traditional monitoring tools, the NSC is perfectly suited for seeing both front-end and back-end server connectivity. Using the Nexthink Web and Cloud capabilities in conjunction with the NSC will ensure that your servers are not connecting to malicious external addresses.

CLEARLY UNDERSTAND END-USER EXPERIENCE WITH PHYSICAL AND VIRTUAL ENVIRONMENTS

Nexthink will greatly enhance your understanding of end-user experience, whether you are using physical or virtual desktops and applications or a combination of both. Just as with a physical server, the NSC installed on a server hosting Citrix or other VDI products, will gather complete end-to-end information about your current virtualization implementation so you can continuously assess whether the goals of virtualization are being achieved.

You can see all mapping, internal and external, of your virtualized applications, how they are being used, and whether delivered versions match the desired policy. Nexthink collects, analyzes, and visualizes real-time data for live and historical





analytics that you can navigate, filter, compare, report, and alert upon. All this gives you the opportunity to become proactive, preemptive, and predictive in managing IT services and security that will benefit the organization and each end-user.

SYSTEM REQUIREMENTS AND PLANNING GUIDELINES

The NSC is part of the Nextthink V6 product and requires V6 infrastructure in order to function. Depending on the state of your current Nextthink implementation, you can choose to have servers reporting to the same Engine as other Collectors or they can choose to install separate Engines for the Server Collectors. Either way, it is important that you retain time with Nextthink Professional Services or a Nextthink partner to ensure that expected performance objectives are met or exceeded.

The NSC currently supports all editions of Windows Server 2008 R2 or later.

Complete [Nextthink infrastructure sizing recommendations](#) are located [here](#). For NSC sizing recommendations we recommend planning for each NSC being equivalent to 15 endpoints.



CONTACT US

To learn more about how Nextthink solutions and services can enhance your IT operations and security, please contact your local Nextthink sales professional or Nextthink partner.

NEXTHINK S.A.

Centre Malley-Lumières
Chemin du Viaduc 1
1008 Prilly - Switzerland

info@nexthink.com www.nexthink.com

